

*...because you deserve a luxurious lifestyle*



PLATINUM  
**amaltas**  
way of luxurious living



**Platinum Group**  
Building Your Dream Home

The developers “**Platinum Group**” now adds yet another skyline to Jaipur...  
a residential project with dreamed amenities..

*B*e the proud owners of.. not just a home  
but a new style of luxurious living in....



## SERVING **LUXURIOUS LIVING** PERFECT **LIFESTYLE MODERN** FEATURES

Rise up to **Amaltas**, the first-of-its-kind high-rise luxury apartments in Jaipur, brought to you by **Platinum Group**. Experience every element of grandeur and magnificence that match your living of opulence and indulgence





apartments specially designed for people  
who love **grand living style**



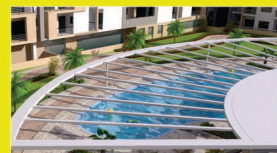
## Project overview...



274 flats  
3BHK & 4BHK



Airconditioned Multipurpose Hall  
for mini theatre, Yoga, Meditation, celebration etc.



Swimming Pool for Adults  
splash pool for kids



Landscaping/Garden  
water bodies and plantation



Gymnasium  
fitness centre with latest equipments



Entertainment Zone  
for kids and young hearts

The **LIFESTYLE** address  
sophisticated - contemporary - spectacular



PLATINUM  
**amaltas**  
way of luxurious living





landscape  
and kids  
play area

club area

podium garden  
and  
jogging track

swimming  
pool

basement  
car parking

well  
secured  
entrance  
gate



rendering New Landmark..

rejuvenate, relive and refresh yourself



Rejuvenate and unwind at ease in the indoor/outdoor sports. Swim or choose a quiet corner in the Library with your favorite book.

You can also workout at the fully equipped Gymnasium or tone up at the Aerobics Room.

We encourage you to display your skills at the Table tennis and Billiards table. If you are too tired for all the above just relax in lush green surroundings.

**Independent Club Area equipped with:**

- Gym
- Creche
- Table Tennis
- Multipurpose Hall
- Garden suitable for party of appx. 800 people
- Billiards Table
- Guest Rooms
- Badminton Court
- Squash Court
- Swimming Pool
- Library
- Cafeteria/Canteen/Restaurant





space is the ultimate luxury...

## Comfort & warmth...

Welcome to Amaltas. The living is gracious. Here, space abounds everywhere.

The room sizes are larger than you're likely to find in today's apartments.

Offering you the best of space and serenity of a private paradise.

### TENTATIVE FEATURES

- Green Building
- Complete Water Recycling and Rain Water Harvesting
- R.O. Water For Drinking
- Power Back Up of 0.50 KVA for Each Flat
- Peaceful and Pollution Free Atmosphere
- 75% Open Area
- Secured Campus with Biometric entry
- Water softeners and filters for entire project
- 15 mins Drive from Jaipur Railway Station/ Bus Stand
- 3 KMS from Vaishali Nagar
- CCTV coverage for entire building
- Flats are three side open.
- Buildings is Vastu Compliant
- WI-FI AND DTH Installed Building
- Gas Bank & Pipe Line
- Garbage Chute
- Provision of two parking's for each flat
- Naturally lighted and ventilated apartments
- Balconies giving open view of greenery





...the grand way of living!



## Lifestyle

One aspires to live the way you dreams and we strive to convert your dreams into reality. At our new creation, we have an elegant architecture that will please your eyes and spacious apartments that will take care of your comfort. The amenities are also specially designed to suit the lifestyle of Kings, Queens and You.

## TENTATIVE SPECIFICATIONS

### Structure:

- R.C.C Frame Structure as per IS codes.
- Vaastu Compliant Construction
- Seismic Zone III, Earthquake Resistant Structure
- High Speed Elevators
- Well Designed Lobbies with Granite Flooring
- 100% Power Backup for Common Area
- Water Recycling System
- Provision for Centralized LPG System
- Disposal Arrangement for Waste
- Advance/Modern Fire Fighting System
- Water Harvesting System
- Security System Managed by Well-Trained Personnel
- CCTV Surveillance for Entire Area

### Doors/Windows:

- Flush Doors (Both side laminated) with good quality fittings
- Full Glass French Windows in Balconies (anodized aluminum/UPVC)

### Flooring:

- Vitrified Tiles/Marble Flooring (Kajaria/Johnson/orient or Equivalent)
- Laminated Wooden Flooring in 1 Bedroom (optional/on request made before flooring is done)
- Anti Skid Tiles in Bathroom and Balconies

### Kitchen:

- Stainless Steel Sink with Provision for Water Purifier
- Kitchen with Granite Counter top And Ceramic tiles Dado up to 2 feet height

### Paint:

- Good Quality Paint for Interior, and Water Proof Cement Paint for Exterior

### Water supply:

- Underground/Overhead Storage Tanks of Suitable Capacity
- Bore-Well for Supply of Water

### Toilets:

- Standard/Good Quality Ceramic Wares EWC with Seat Cover and Flush Tank in Toilets
- Premium Brand CP Titting with Shower (Jaquar/plumber or equivalent)
- Designer Ceramic Tile up to Door Height
- No Dark Toilets
- Easy to Maintain Shafts, Plumbing And Sanitary System

### Electricity:

- Adequate Number of Electric Points with Concealed Conduits, Modular Switches for Power and Lighting
- Power Back up in Common Area
- TV, Phone and Intercom System in Each Flat
- Tube Light & Fan in Each Room & Lobby

### Lifts:

- 2 Nos. Suitable Capacity (Automatic) Lifts in Sach Block Including one Stretcher Lift

### Common Amenities:

- Project Approved by J.D.A.
- Garden with Beautiful Landscaping
- 75% Open Area
- Jogging Track
- Intercom
- Power Back up in Common Areas
- Fountains
- Rain Water Harvesting System
- Entrance Lobby in Granite Flooring
- Children's Play Area

### Optional Features (Against Additional Payment):

1. Air Conditioning in all Bed Rooms & Lobby
2. Wardrobes in all Rooms
3. Modular Kitchen
4. Bathroom Accessories





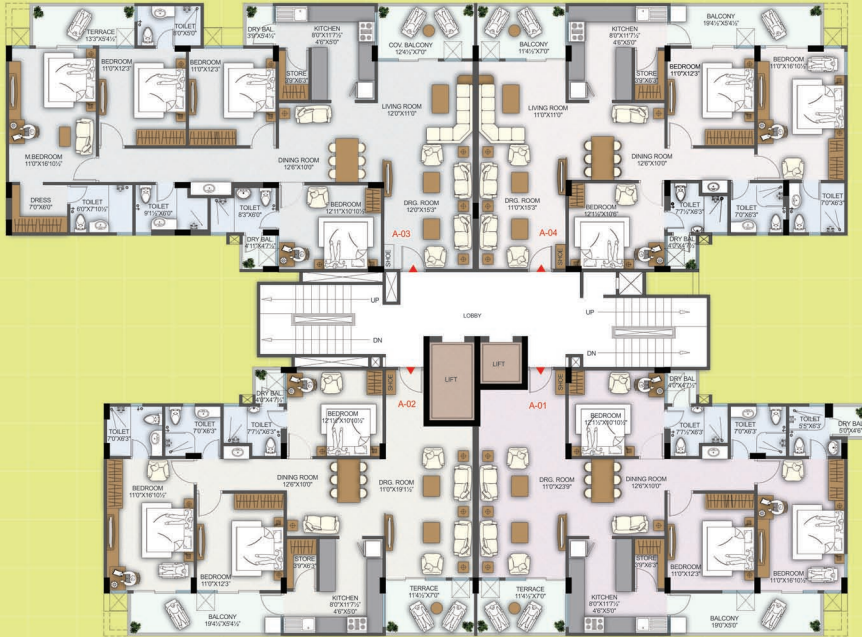
*explore the world within.....  
with the finest in luxury*



# TYPICAL FLOOR PLAN BLOCK-A (1ST-13TH)

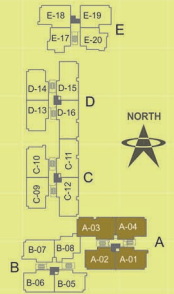


# TYPICAL FLOOR PLAN BLOCK-B (1ST-13TH)



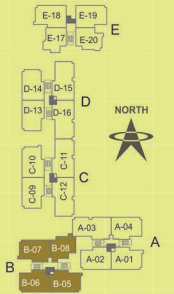
**TYPICAL FLOOR PLAN  
BLOCK-A (1ST - 13TH)**

FLAT A-01 : SBUA =1947.12 SQ.FT  
 FLAT A-02 : SBUA =1901.06 SQ.FT  
 FLAT A-03 : SBUA =2414.25 SQ.FT  
 FLAT A-04 : SBUA =1952.47 SQ.FT



**TYPICAL FLOOR PLAN  
BLOCK-B (1ST - 13TH)**

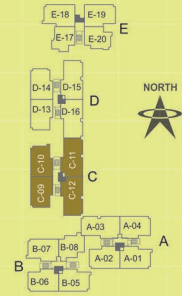
FLAT B-05 : SBUA =1952.80 SQ.FT  
 FLAT B-06 : SBUA =1901.06 SQ.FT  
 FLAT B-07 : SBUA =1957.15 SQ.FT  
 FLAT B-08 : SBUA =1767.79 SQ.FT



# TYPICAL FLOOR PLAN BLOCK-C (1ST-13TH)

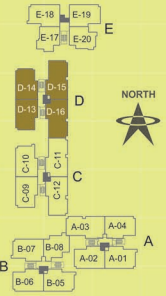


# TYPICAL FLOOR PLAN BLOCK-D (1ST-13TH)



TYPICAL FLOOR PLAN  
BLOCK- C (1ST - 13TH)

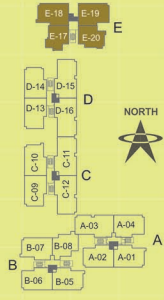
- FLAT C-09 : SBUA =1952.47 SQ.FT
- FLAT C-10 : SBUA =1968.90 SQ.FT
- FLAT C-11 : SBUA =2391.70 SQ.FT
- FLAT C-12 : SBUA =2361.26 SQ.FT



TYPICAL FLOOR PLAN  
BLOCK- D (1ST - 13TH)

- FLAT D-13 : SBUA =1952.47 SQ.FT
- FLAT D-14 : SBUA =1944.96 SQ.FT
- FLAT D-15 : SBUA =2391.70 SQ.FT
- FLAT D-16 : SBUA =2361.26 SQ.FT

**TYPICAL FLOOR PLAN  
 BLOCK-E (1ST-13TH)**



**TYPICAL FLOOR PLAN  
 BLOCK- E (1ST - 13TH)**

FLAT E-17 : SBUA =1466.01 SQ.FT

FLAT E-18 : SBUA =1985.47 SQ.FT

FLAT E-19 : SBUA =1968.2578 SQ.FT

FLAT E-20 : SBUA =1595.25 SQ.FT



*...the grand way of living!*

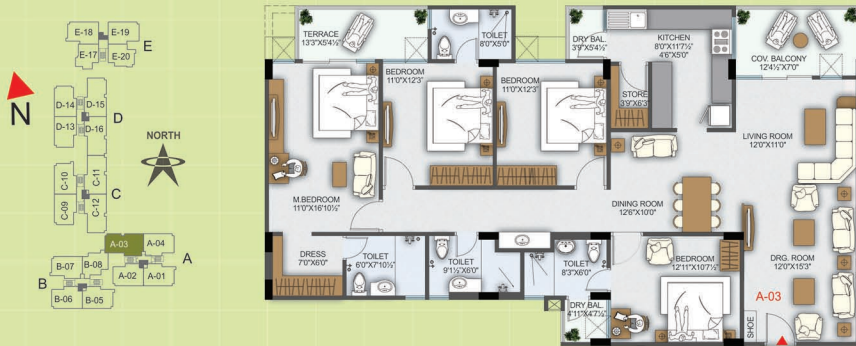


TYPE-A03

SBUA=2414.25 SQ. FT.

TYPE-B08

SBUA=1767.79 SQ. FT.



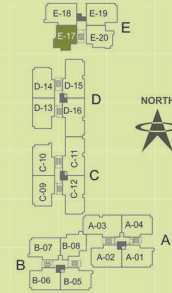
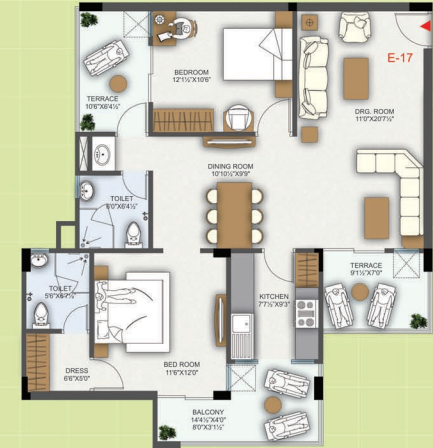
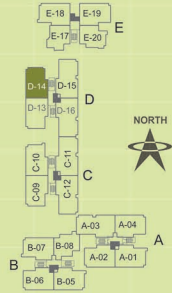
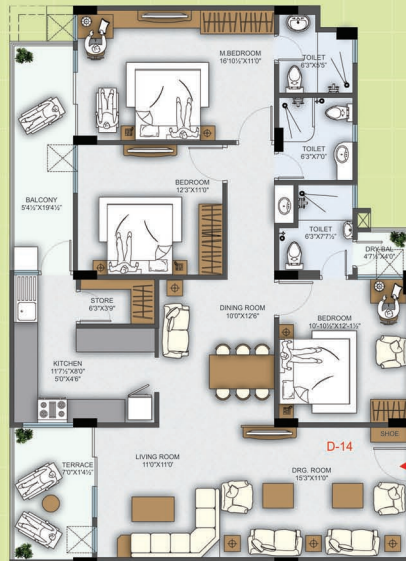
TYPE-D14

SBUA=1944.96 SQ. FT.



TYPE-E17

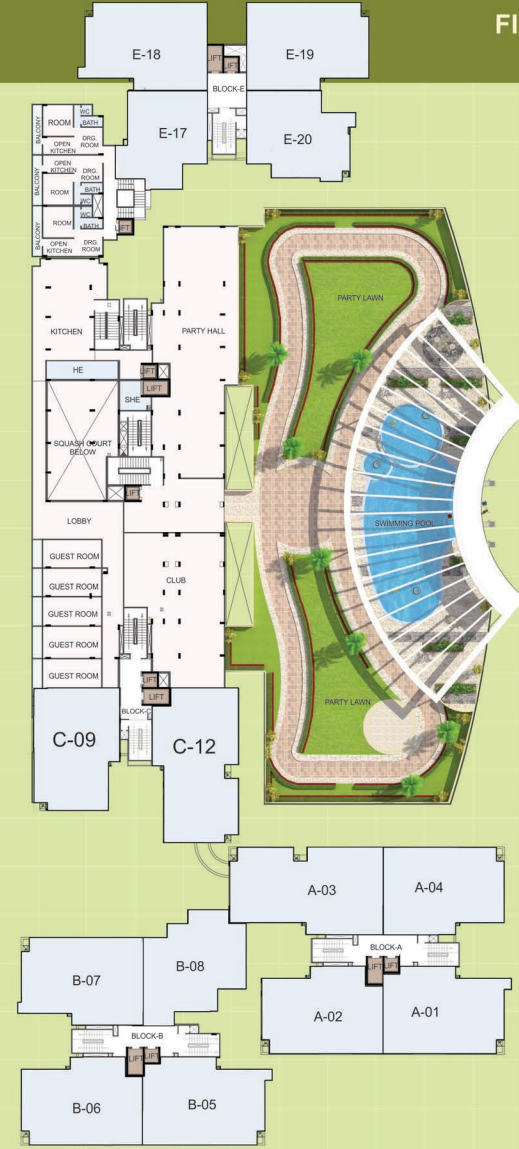
SBUA=1466.01 SQ. FT.



**SITE PLAN  
(STILT PARKING)**



**FIRST FLOOR PLAN  
(PODIUM LEVEL)**



# LOCATION MAP



**PLATINUM**  
**amaltas**  
way of luxurious living

site address:  
amaltas, vaishali marg, near kanak vrindavan,  
sirsi road, jaipur

## THE GROUP



Platinum Group was founded by Shri Swatantra Gupta and Shri Vijay Mehta in 2006 with a vision to create landmarks in Real Estate. Since then the company is progressing in this direction and is bound to be a world class construction company.

It is our mission to construct dreams into comfortable and astounding homes and residential complexes. We are also committed to achieve engineering feats by building beautiful edifices and landmarks for prosperity.

The group has been further strengthened by association of Shri Om Prakash Mittal of K K Group who is engaged in various businesses such as export, import, hotel, education and many more. The group is also supported by Shri Yogendra Gupta who owns various Diagnostic Centres across Jaipur City.

Shri Subhash Gupta of Kiran Modes (a star export house) and Shri Rishi Mehta a Chartered Accountant by profession are actively putting their efforts to take the group to newer heights.

The team of experienced and qualified professionals is devoted for execution of projects ensuring quality construction and complete customer satisfaction.



# SOME OF OUR PROJECTS

COMPLETED

ONGOING

ONGOING

UPCOMING



ROSEWOOD  
at Sirsi Road, Jaipur



MAYFAIR  
at G-Scheme, Jaipur



PLATINUM SHUBH RATAN  
at Bani Park, Jaipur

GROUP HOUSING  
At Jaipura Compound,  
Behind Triton Mall, Jaipur

SUPER PREMIUM APARTMENT  
At Prithviraj Road, Jaipur

RESIDENTIAL APARTMENTS  
At Sikar Road, Jaipur





PLATINUM  
**amaltas**  
way of luxurious living



**Platinum Real Mart LLP**  
Building Your Dream Home

Rosewood Apartments, Sirsi Road, Jaipur (Raj) 302021

call:  
90011 33333, 80031 84115, 98290 59833

mail:  
info@platinumgroupindia.com  
rishi@platinumgroupindia.com

url: [www.platinumgroupindia.com](http://www.platinumgroupindia.com)

**architect:**

nitya urbanscape  
7-A, Keshav Vihar, Gopalpura Bypass,  
jaipur.

Tel.: 0141-2763277

mail:  
nityaurbanscape7@gmail.com  
bajjindersingh236@gmail.com

disclaimer: This brochure is purely conceptual and not a legal offering. Further the promoters / architect reserve the right to change any details mention herein.